

Coming Soon:

Track remodelling at Yarmouth, Level Crossing upgrade at Brundall, new platform extension at Brundall and User Worked Crossings with Stop Lights at several locations.
(Below shows computer generated impression)



- **£68 million** investment – Signalling, Track, Civils, Power Systems and Telecoms
- **1 new platform extension** to allow greater operating flexibility
- **4 track remodellings** for modern train operation
- **6 new power supply systems** with full back-up should the grid supply fail
- **6 public road level crossings** modernised with barriers and road traffic light protection
- **11 User worked crossings** upgraded with Stop Lights for safer crossing



How will train services be affected and when:

Norwich to Yarmouth

Rail replacement buses will be provided for all affected journeys during this time
A rail replacement bus service will run between Norwich and Yarmouth from **Saturday 21 October until Monday 30 October 2017**.

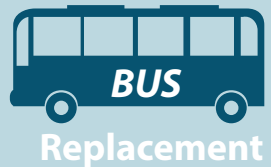
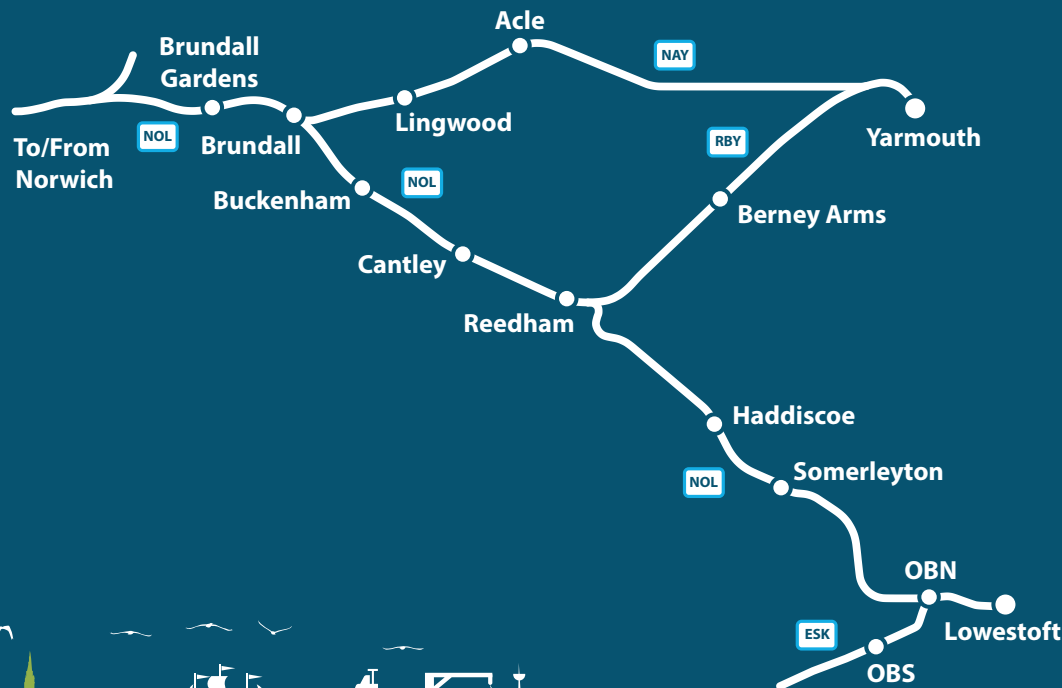
Please note that there will be no passenger or replacement services at Berney Arms throughout these works.

Mid-week services between Norwich and Lowestoft

Peak services will operate as normal on routes between Lowestoft and Norwich **Monday to Friday** except between the hours 10:30 - 15:50 when a bus replacement service will be provided.

Norwich to Lowestoft

A rail replacement bus service will run between Norwich and Lowestoft for the weekends of **21-23 October and 28-30 October 2017**. Train services will be suspended from end of normal service Friday until Monday morning.



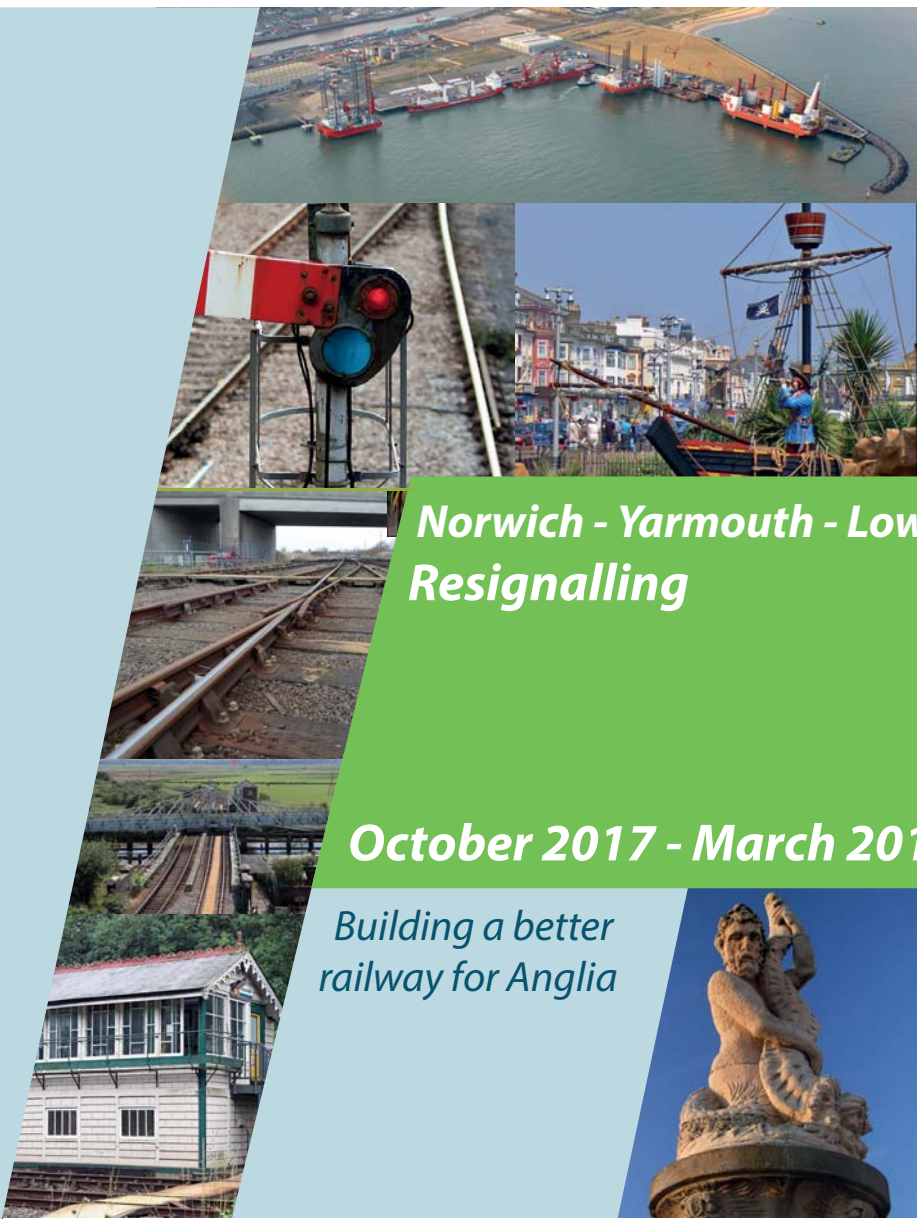
Alternative Travel

Replacement buses will be available to assist you on your journeys from

Saturday 21st October	
ROUTE	JOURNEYS PER DAY
Norwich to Yarmouth	22
Norwich to Lowestoft	18
Ipswich to Lowestoft	16
Sunday 22nd October	
ROUTE	JOURNEYS PER DAY
Norwich to Yarmouth	16
Norwich to Lowestoft	8
Ipswich to Lowestoft	8
Monday 23rd October until Friday 27th October 2017	
ROUTE	JOURNEYS PER DAY
Norwich to Yarmouth	26
Norwich to Lowestoft	6
<i>*Ipswich to Lowestoft normal train service applies</i>	
Saturday 28th October	
ROUTE	JOURNEYS PER DAY
Norwich to Yarmouth	22
Norwich to Lowestoft	18
Ipswich to Lowestoft	16
Sunday 29th October	
ROUTE	JOURNEYS PER DAY
Norwich to Yarmouth	16
Norwich to Lowestoft	8
Ipswich to Lowestoft	8

Please check before you travel at:
greateranglia.co.uk/alterations

For up to date information about these works or any of the future please visit:
networkrail.co.uk/contactus or phone Network Rail Helpline on **03457 11 41 41**



Norwich - Yarmouth - Lowestoft Resignalling

October 2017 - March 2019

Building a better
railway for Anglia





What is happening?

There will be significant engineering works undertaken on the Norwich-Yarmouth-Lowestoft lines between October 2017 and March 2019. This will result in major changes to train services which will affect your journey.

Network Rail will be working at several locations to improve the railway and provide the level of reliability that our passengers expect.

Norwich Yarmouth Lowestoft Re-Signalling

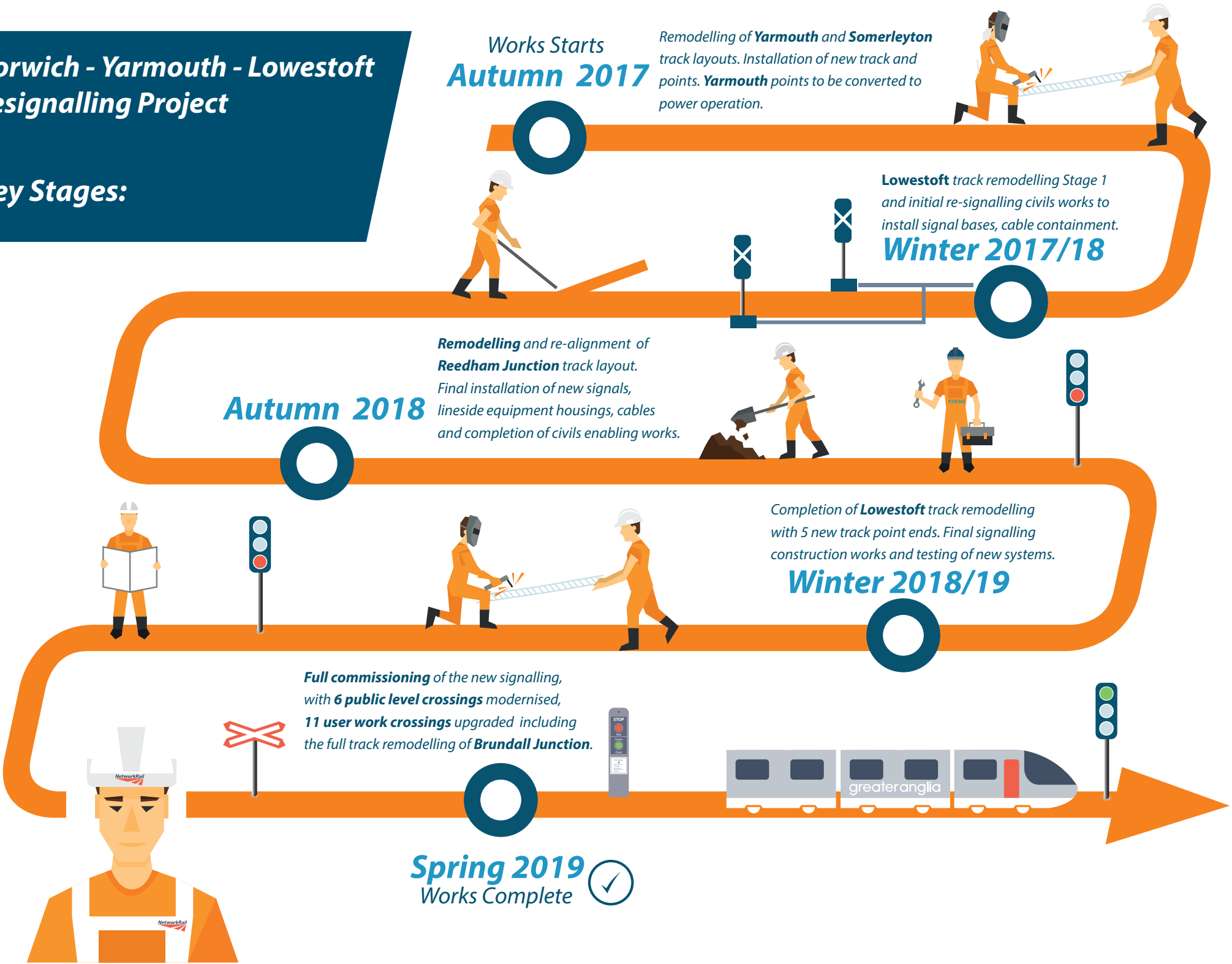
Replacement of mechanical Victorian signalling with modern technology incorporating colour light LED signals, power operated points and a remote computer based signalling control system replacing levers and physical operation.

Crossing keeper operated level crossing gates will be replaced with a modern barrier type remotely controlled by the Signaller using CCTV.

Track layouts at several locations will be rationalised and remodelled to cater for a modern railway.

Norwich - Yarmouth - Lowestoft Resignalling Project

Key Stages:



Why are we doing it?

These works are a vital aspect of our strategy to provide a safe, reliable and efficient railway fit for the 21st century.

- Overall improved safety and reliability
- Improved operational flexibility
- Improved level crossing safety
- A sustainable and efficient railway using modern technology
- Reduction in level crossing road closure durations
- A 24/7 railway with supported systems

